

ALLEN & HEATH

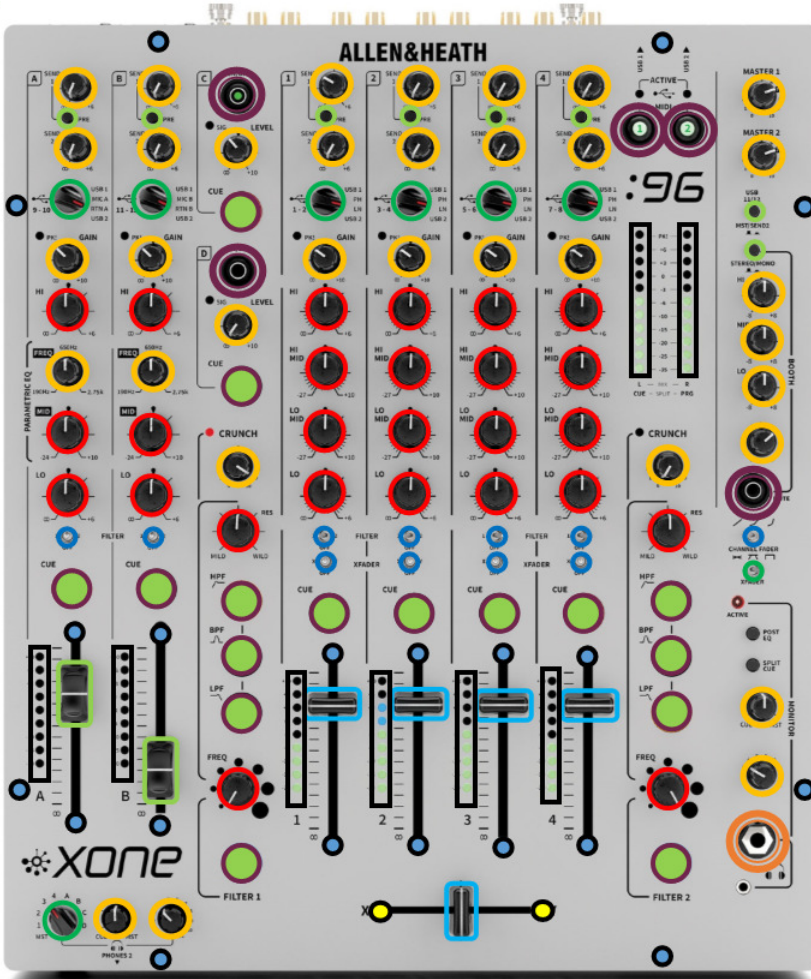


XONE:96

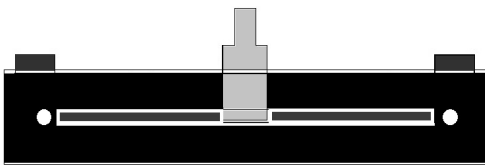
PARTS IDENTIFICATION DOCUMENT

DISTRIBUTOR USE ONLY

ISSUE 1



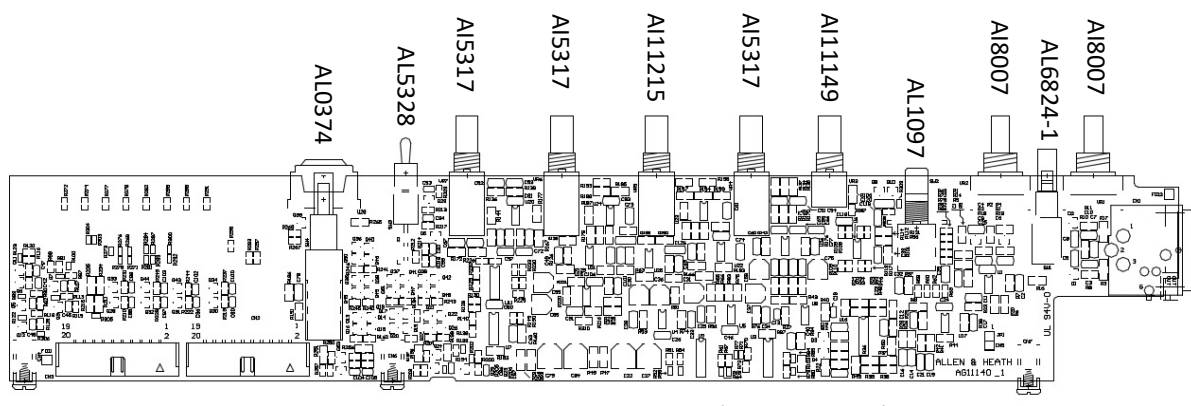
Icon	Description	Part #
	KEYMAT RUBBER XONE:96	AA11220
	KNOB BK-WH.LS SOFT LGE	AJ7305
	KNOB D-SHFT	AJ11230
	KNOB BK-WH.L SOFT SML	AJ7304
	JACK SKT ST PCB MET+NUT	AL11555
	KNOB FDR BK-WH.L XONE	AJ5320
	KNOB FDR 12MM BK-WH	AJ9015
	SW.TOG SPDT M7 CEN OFF	AL5328
	LIGHTPIPE XONE:96 CUE	AJ11232
	PUSH BTN XONE:96 CAP CUE	AJ11233
	SCREW M3X5 TRUNC CSK TORX BK	AB8592
	SCREW M3X6 CSK POZI BK	AB5836
	NUT POT 9MM BLACK ZINC	AB8172
	Pot nut silver	SNUT
	PUSH BTN ROUND BLK 5MM	AJ5388
	SW.TOG DPDT CENT.OFF	AL11139
	LIGHTPIPE XONE:96 ARRAY	AJ11231



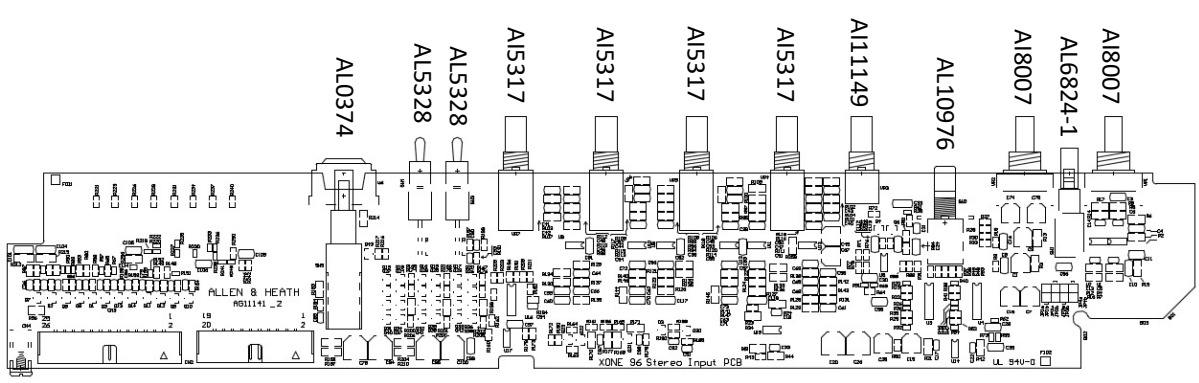
Mic CH Fader	CH-fader	X-fader
004-1006	004-999	N/A
Potentiometer	Potentiometer	Potentiometer
AI11234	AI11235	AI11470



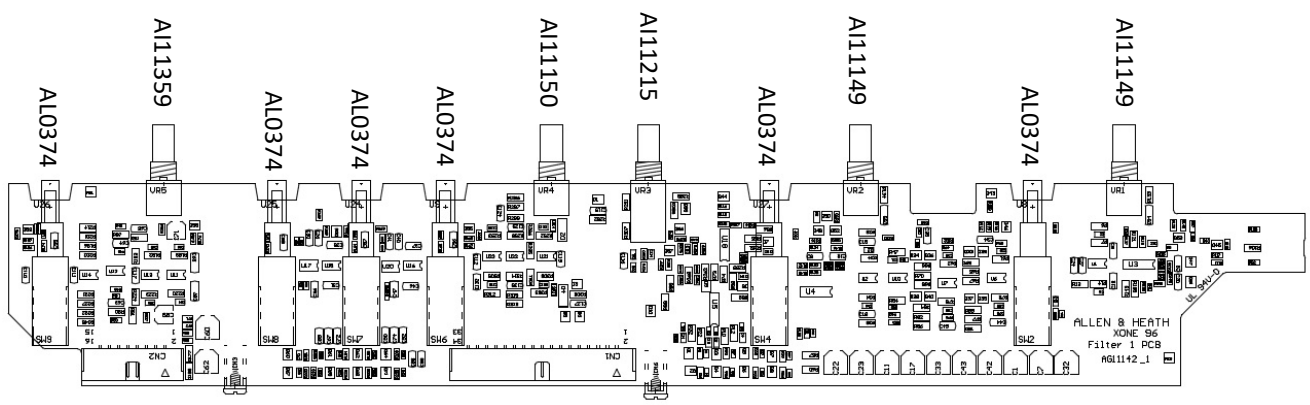
- AJ2887
 - AB4393
 - AB8592
 - AB5564
 - AL8106
 - AB7422
 - No part #
 - AJ7211
- (part supplied on request)



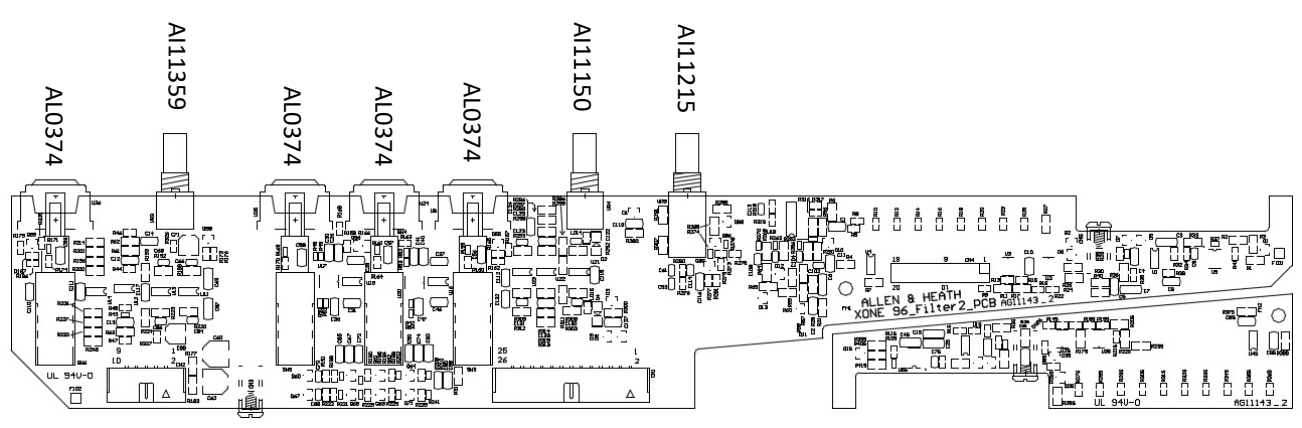
MIC RTN Assembly 004-965 (PCB AG11140)



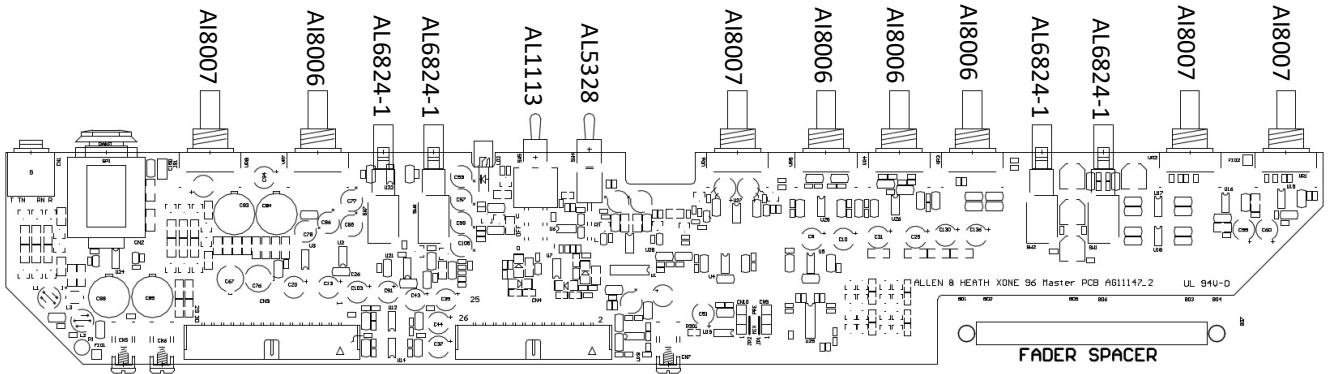
STEREO INPUT Assembly 004-966 (PCB AG11141)



FILTER 1 Assembly 004-967 (PCB AG11142)

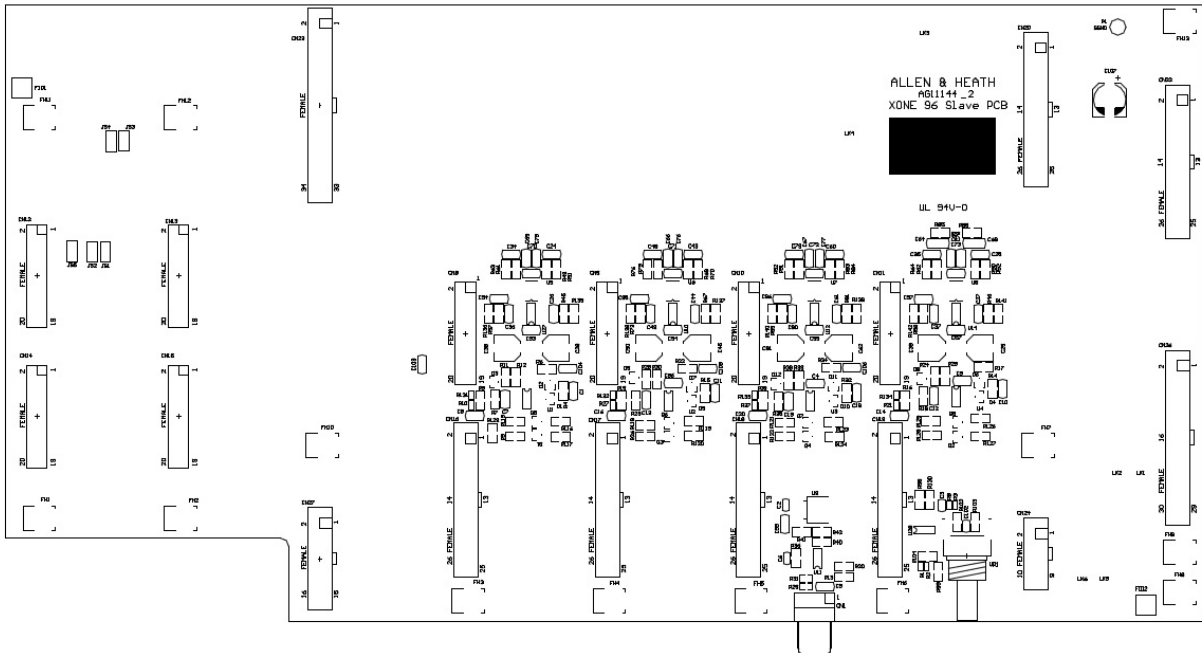


FILTER 2 Assembly 004-968 (PCB AG11143)

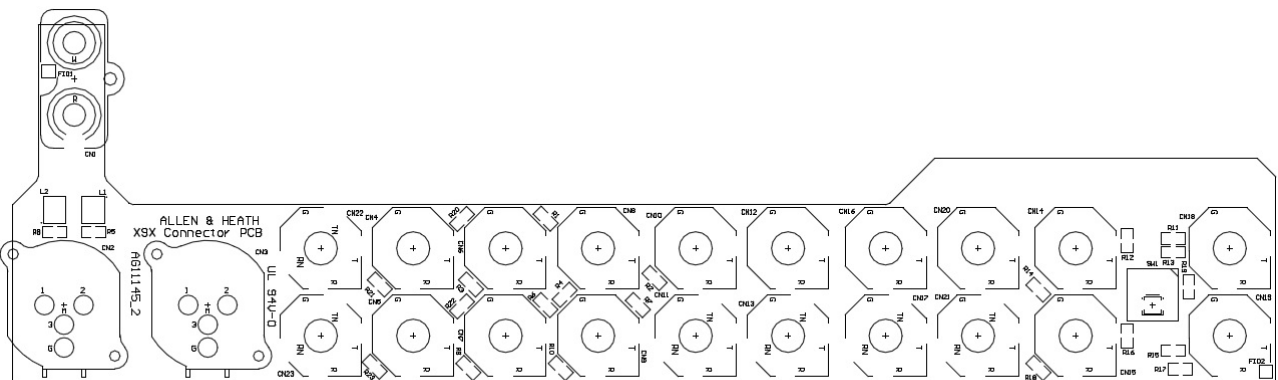


MASTER Assembly 004-972 (PCB AG11147)

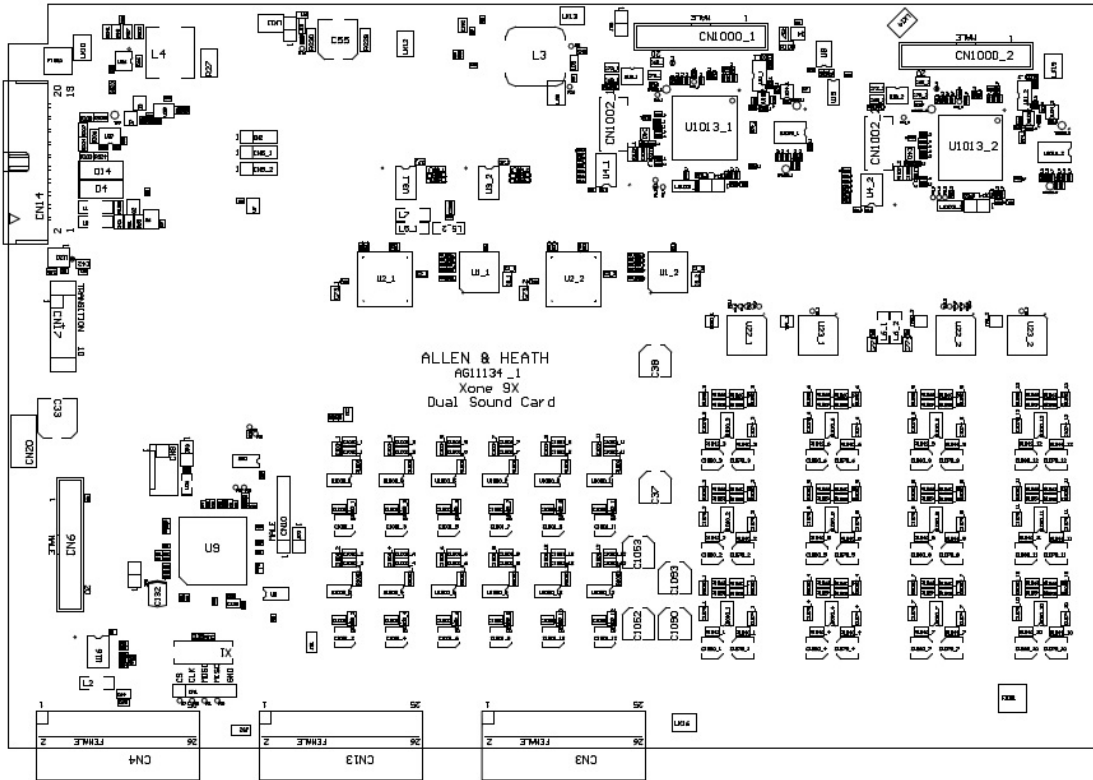
MIC RTN 2 Assembly 004-997 (PCB AG11140)



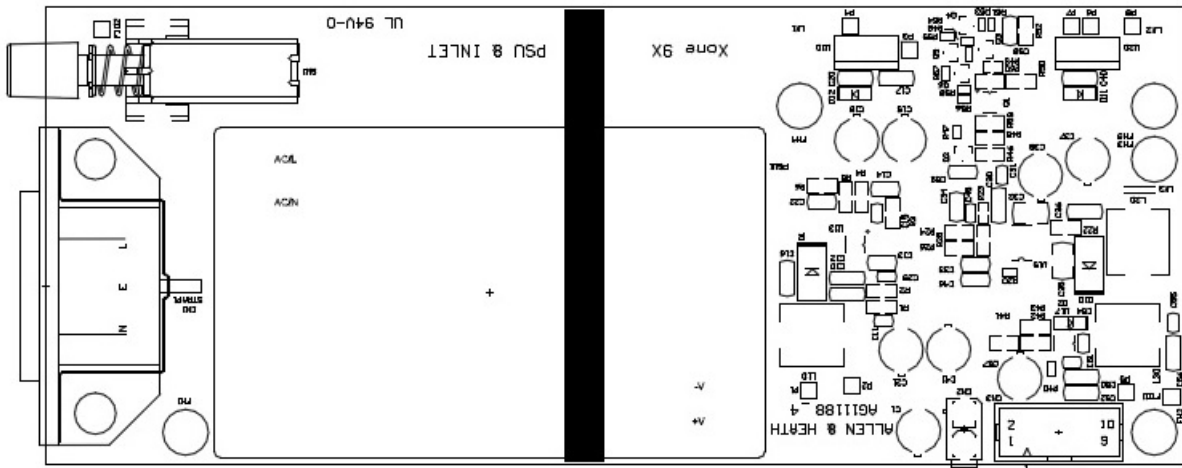
SLAVE Assembly 004-969 (PCB AG11144)



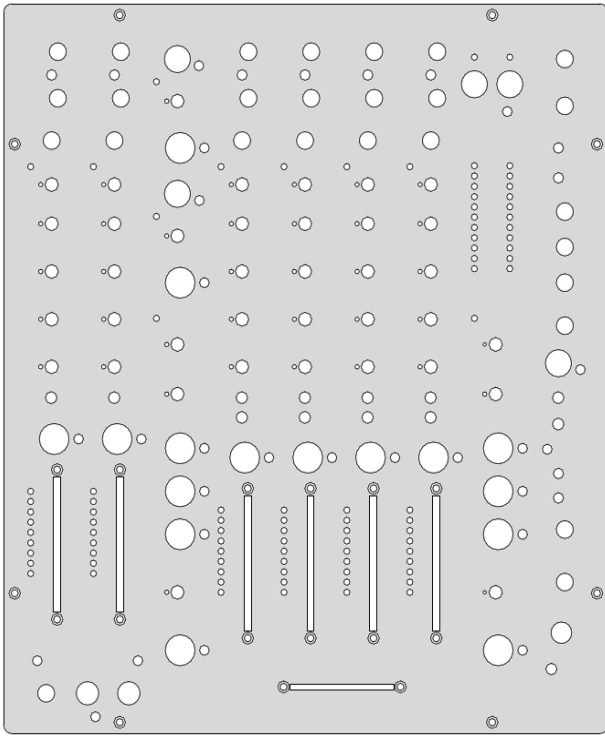
CONNECTOR Assembly 004-970 (PCB AG11145)



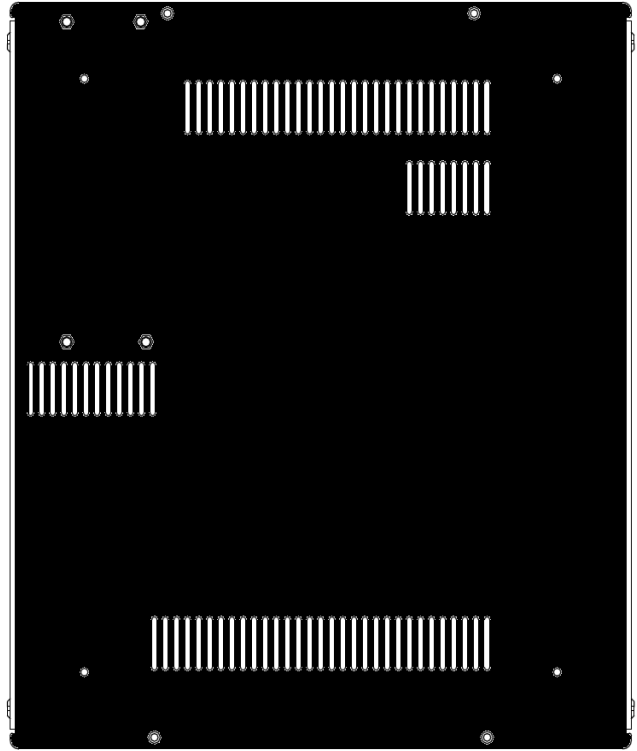
SOUNDCARD Assembly 004-962 (PCB AG11134)



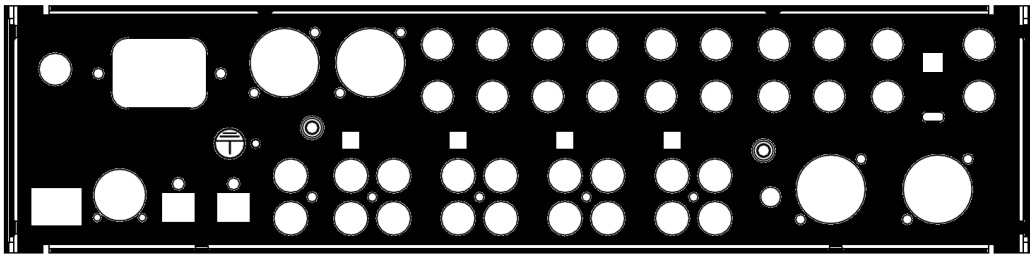
PSU Assembly 004-989 (PCB AG11188)



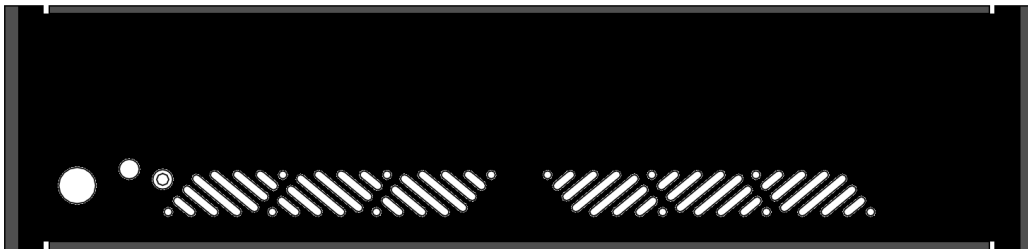
AA11224 TOP PNL XONE:96



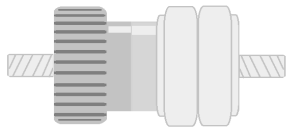
AA11221 BASE XONE:96



AA11223 REAR PNL XONE:96



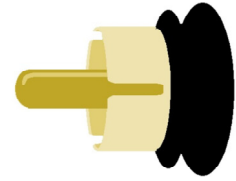
AA11222 FRONT PNL XONE:96



AL8106
TERM.POST EARTH 2BA NICKE



AL8797
PLUG BLANK RJ45 BLACK



AL11927
PHONO PLUG SHORTING



AK8830
FEET FAST 40DIA.SHOCK/VIBR.BLK



AB8831
RIVET PLAST SNAP 4MM BLK



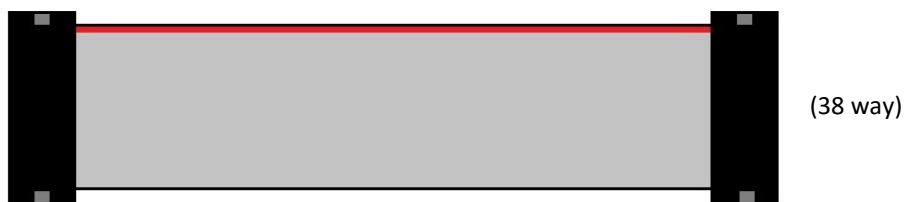
AL11203 IDC WFM XONE:96 SLAVE - HEADPHONE B



AL11204 IDC WFM XONE:96 DIG.I/O - SOUND CARD



AL11206 IDC WFM XONE:96 PSU - SOUND CARD



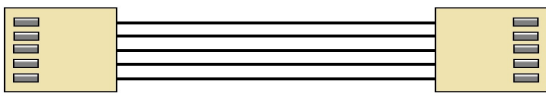
AL11202 IDC WFM XONE:96 REAR CONN - SLAVE



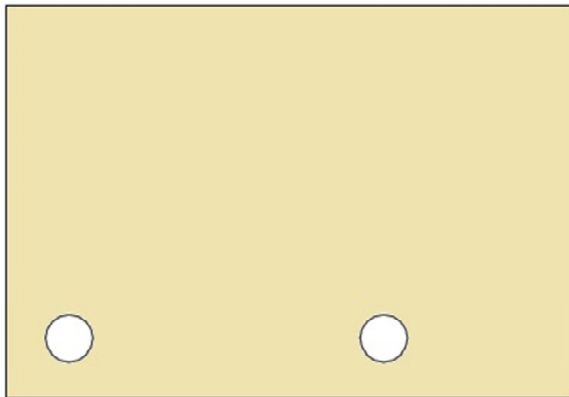
AH11587 CABLE USB 'CLIK-M



AL11205 WFMA XONE:96 PSU - S'CARD



AL11207 WFMA XONE:96 SLAVE-XFDR



AA11226 INSUL.POLYFILM XONE:96 PSU