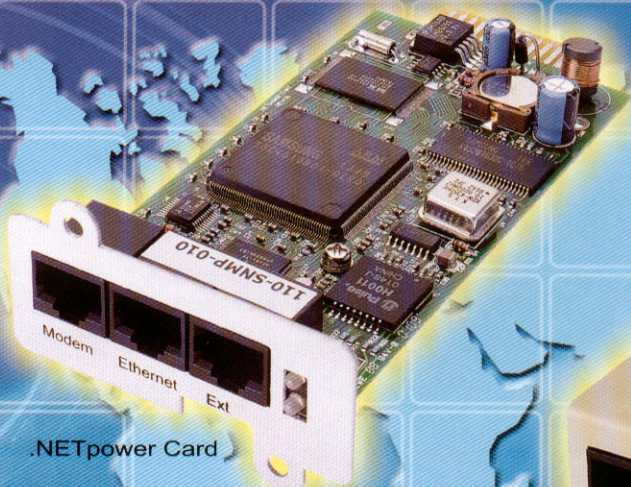


.NETpower SNMP/WEB Card/Box

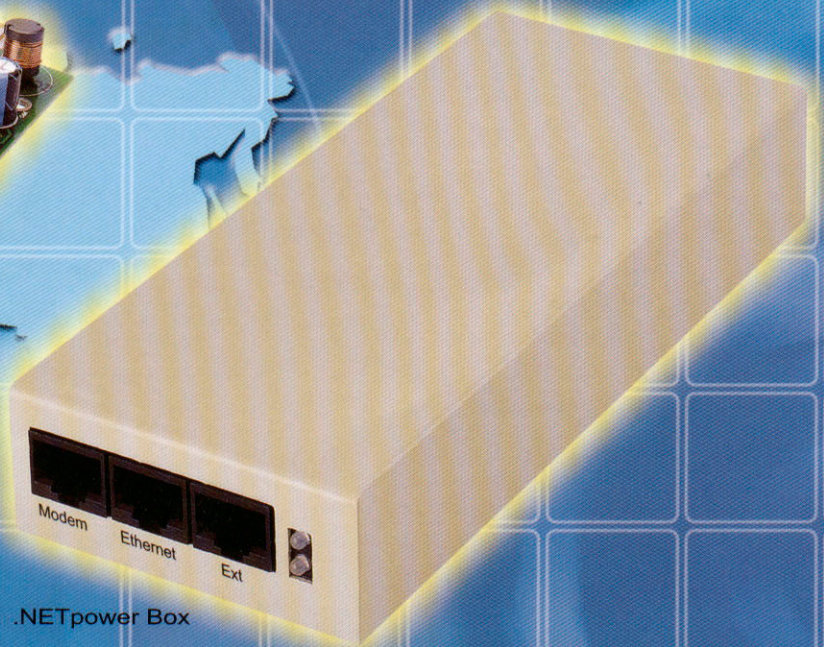
The .NETpower card/box provides you with a very advanced yet easy-to-use network management function. It supports both SNMP and HTTP.

SNMP (Simple Network Management Protocol) is used widely in network management field. With the support for SNMP, the .NETpower turns the UPS into an industrial standard network management device. You can use an SNMP NMS (such as HP OpenView, IBM NetView...) to manage your UPS over LAN or Internet.

Moreover, the .NETpower card will create a web site for your UPS. You can view the information of the UPS and control the UPS remotely as easily as surfing on a web site. In addition to the network management function, it will notify you when an event occurs, and even shut down multiple systems on the LAN.



.NETpower Card



.NETpower Box



Complete Power Solution™

ISO 9001 Certified Company

FEATURES

Network Interface

UTP Fast Ethernet 10/100 auto-sense

Serial Port

Used as a console port or connected to a MODEM allowing PPP dial-in and paging.

Extension Port

Connected to an extended device such as environment measurement.

Real Time Clock

Time can be adjusted by SNTP.

Setup/Configuration

Allows setup via telnet or console.

Firmware Upgradeable

Upgrades firmware via a web browser or TFTP.

Multiple System Shutdown

Sends a shutdown signal to shut down multiple systems on LAN.

Event Notifications

Includes network message, OnEvent multimedia message, email and page.

SNMP Network Management

Supports SNMP v1.0 and v2.0. Supports RFC 1213 (MIB-II), RFC 1628 (UPS MIB), and private UPS extension MIB. Compatible with any standard SNMP NMS such as HP OpenView, IBM NetView...

Web Network Management

Supports HTTP 1.0 protocol. Combined with HTML, JavaScript and Java Applet.

Telnet Management

Allows management via telnet.

Graphic Information Management

Includes Power Meter, Block Diagram, Power Scope, and Log Analysis.

Event Logging

Contains all UPS-related events

Data Logging

A collection of the UPS power quality.

Scheduling

Perform shutdown, startup, and self-test according to the scheduling settings.

Flexible Event Action

Provides flexible event action feature.

Controlling UPS

Allows you to shut down, reset, or test the UPS remotely.

Configuring UPS

Allows you to configure the UPS remotely.

Password Security

Provides password protection.

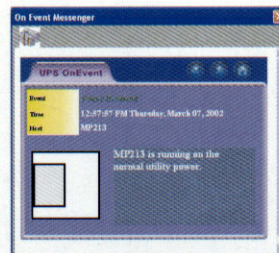
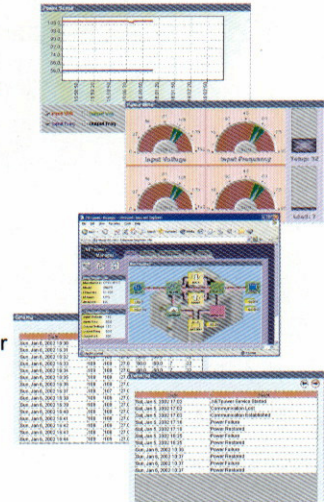
Multilingual

Information Management

The .NETpower allows you to view the information and status of the UPS locally or remotely. It presents the information in graphic formats from some different point of view: inside activity, power meters, and scope chart.

The .NETpower maintains two log files

- an event log file which contains all UPS-related events, such as power failures, shutdowns, power recoveries, etc.
- a data log file which is a collection of the UPS power quality, including input voltage, output voltage, battery voltage, temperature, etc.



OnEvent

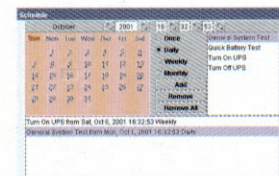
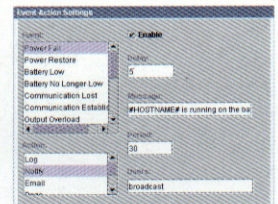
OnEvent is a new notification technology, which can exchange multimedia message over LAN, regardless of operation system. When a power event occurs, a multimedia message box will be displayed on each computer with OnEvent software installed.

It is also a shutdown agent which will shut down the system when receiving a shutdown signal from the .NETpower card.

Flexible Event Action

You can define actions for each event.

The .NETpower will perform actions according to your definitions when an event occurs. The actions include logging, network notification, email, paging, executing command file, and system shutdown.



Scheduling

The .NETpower allows you to set up the schedule for your UPS so that it can shutdown/startup the system or initiate self-test automatically according to your settings.

Ordering Information

.NETpower Card (internal model)

Model No : NPC-100

.NETpower Box (external model)

Model No : NPB-200

Available Through:



Complete Power Solution™

ISO 9001 Certified Company

The .NETpower is an advanced version of the UPS s/w that has the following awards:

